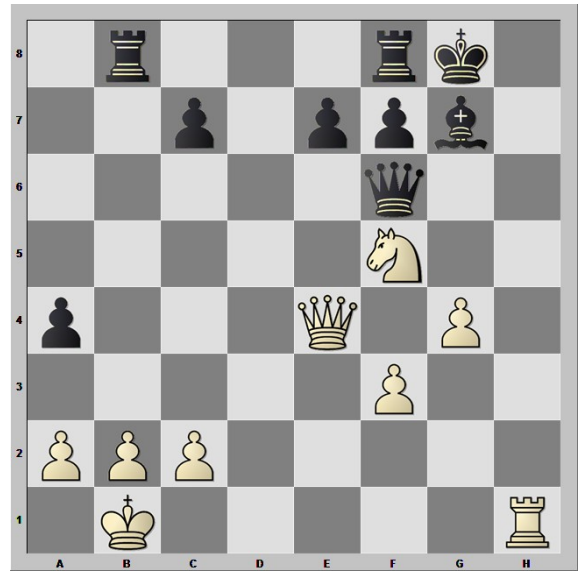
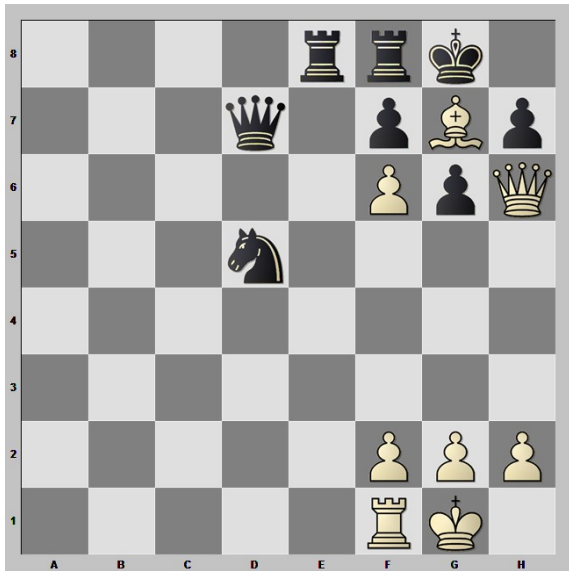


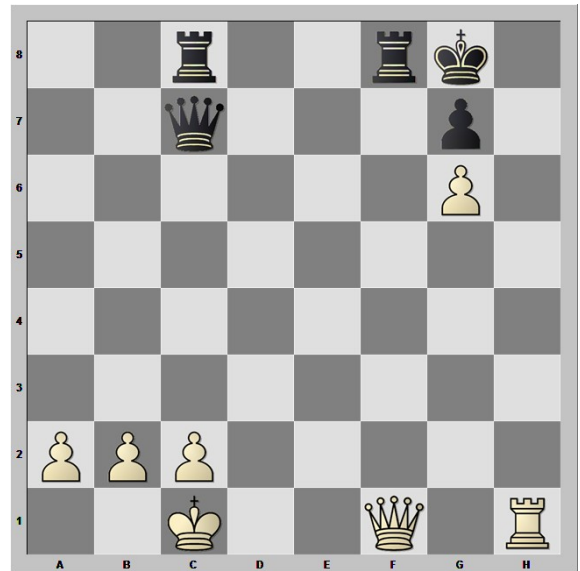
Weiß am Zug



Weiß am Zug



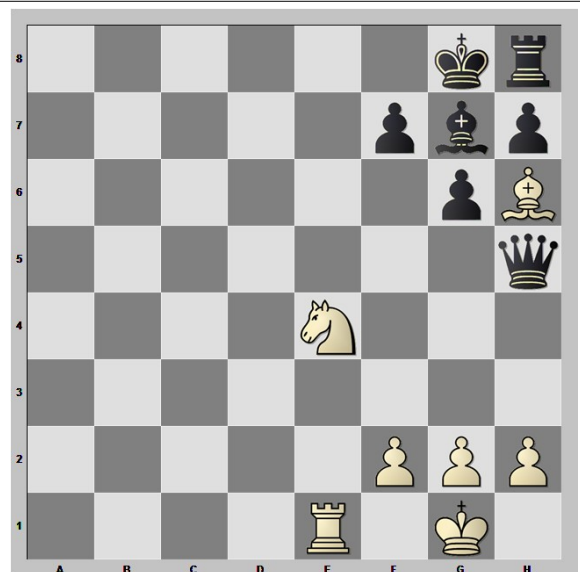
Weiß am Zug



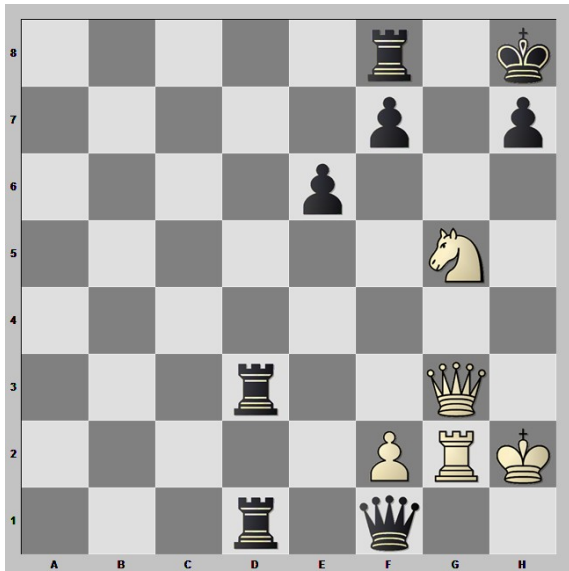
Weiß am Zug



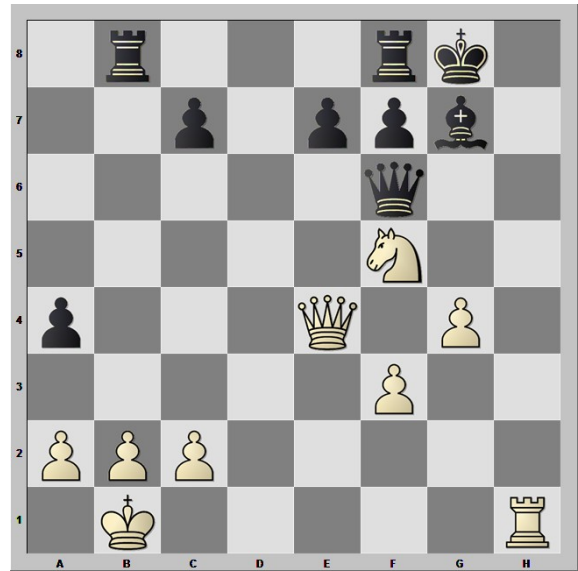
Weiß am Zug



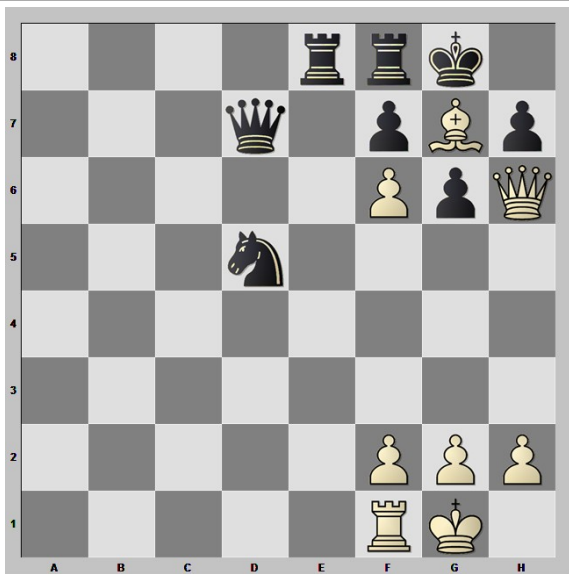
Weiß am Zug



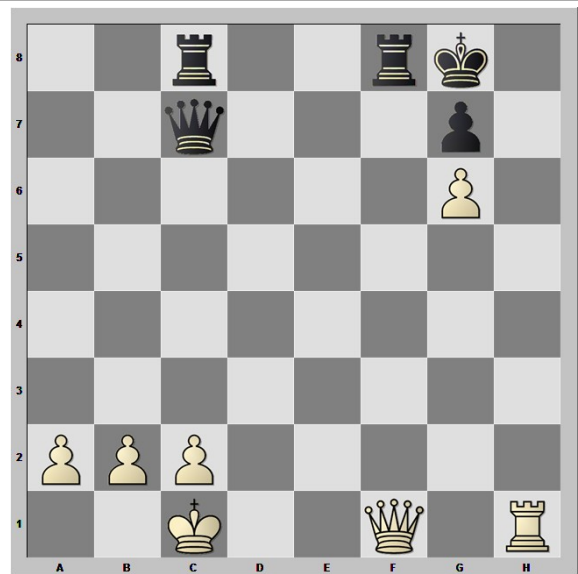
1. Sxf7+ TxS 2. Dg8#



1. Sxe7+ DxS 2. Dh7#



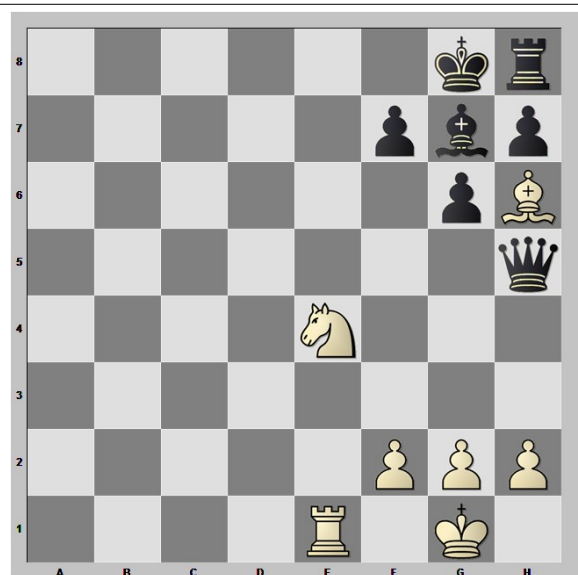
1. Lh8 (oder LxT) Sxf6 (oder KxL) 2. Dg7#



1. Th8+ KxT 2. Dh3+ Kg8 3. Dh7#



1. e5! (räumt den Platz für den Springer) dxe6 2. Se4 mit Gewinn des gefesselten Lf6



1. Sf6+ LxS (Kf8? Te8#) 2. Te8#