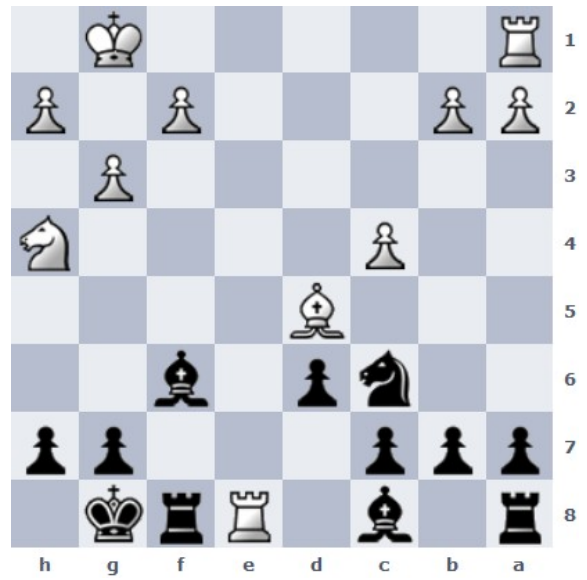
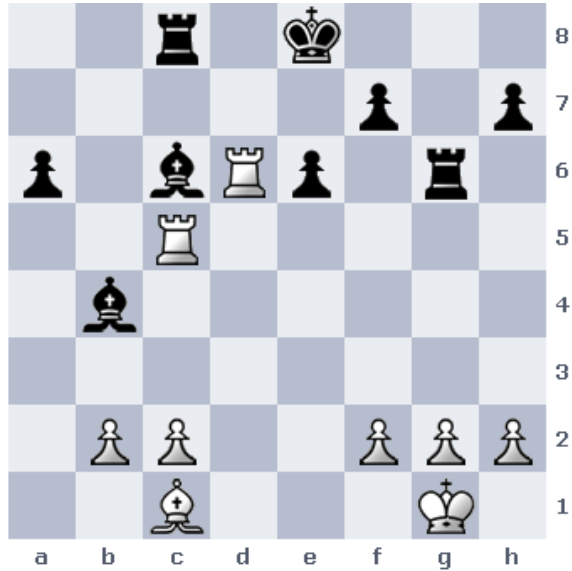


Weiß am Zug



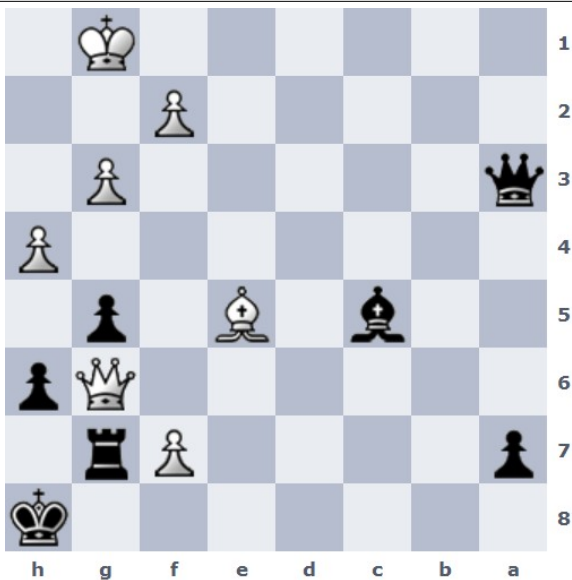
Schwarz am Zug



Weiß am Zug



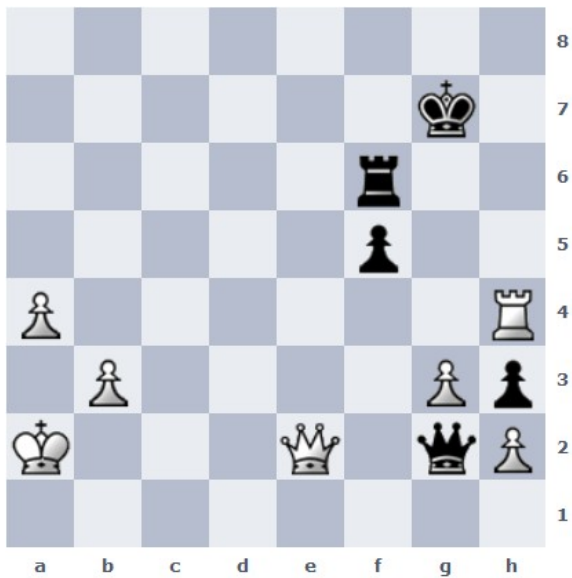
Weiß am Zug



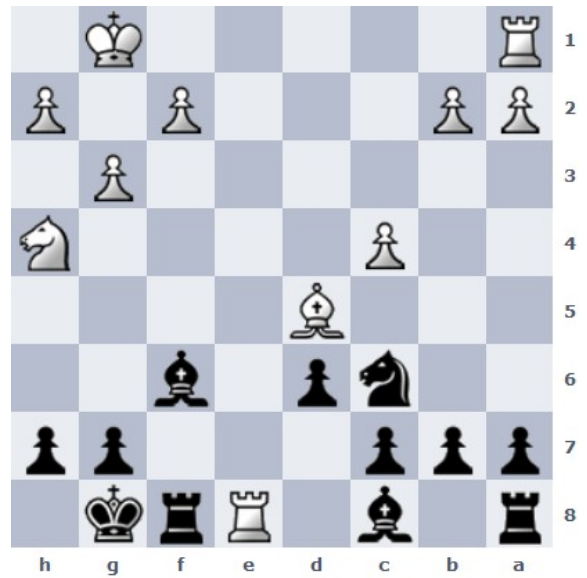
Schwarz am Zug



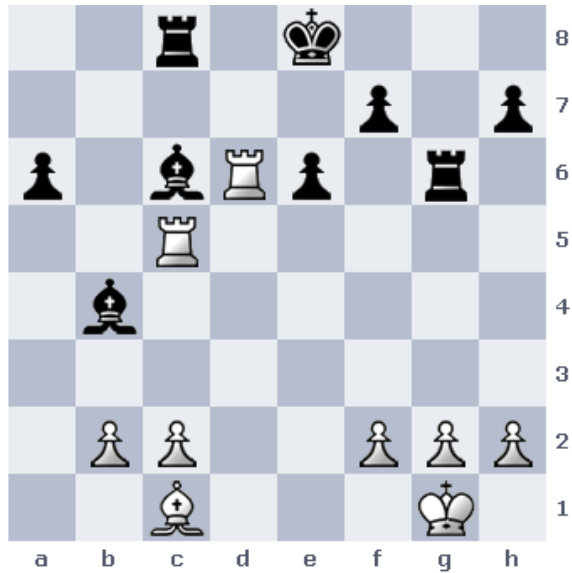
Weiß am Zug



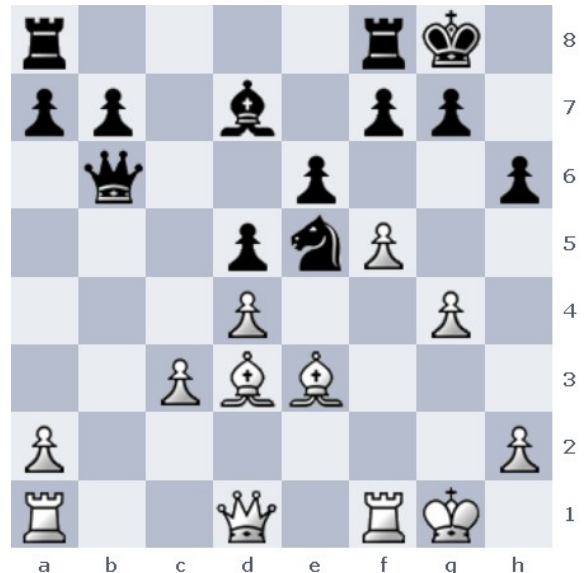
1. Db2



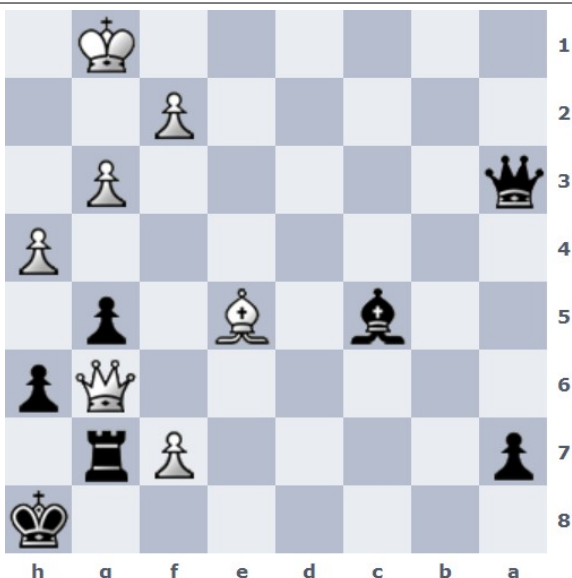
1. ... Le6 2. LxL+ Kh8



1. T5xL (TdxL? Td8! droht Td1# und LxT) mit Läufergewinn



1. Tb1 Dc7 (nun ist der Bauer d4 nicht mehr gefesselt)
2. dxe5



1. ... Dxg3+!! 2. Kh1 (LxD? TxD) Df3+ 3. Kh2 Dxf2+
4. Kh3 g4+ 5. Dxg4 (Kg3? Df3+ Kh2 Dh3#) DxD+!



1. TxS! bxc6 2. Se7+ Kf8 3. DxT+