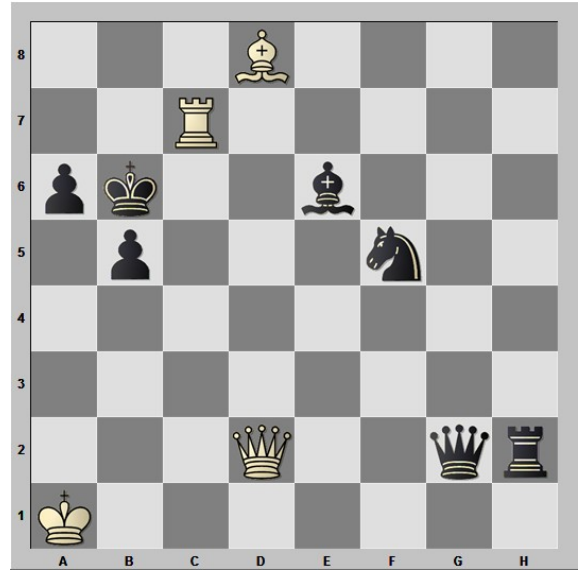
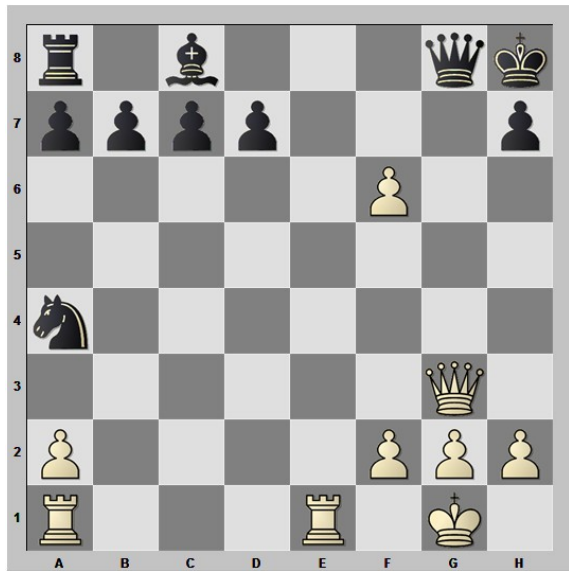


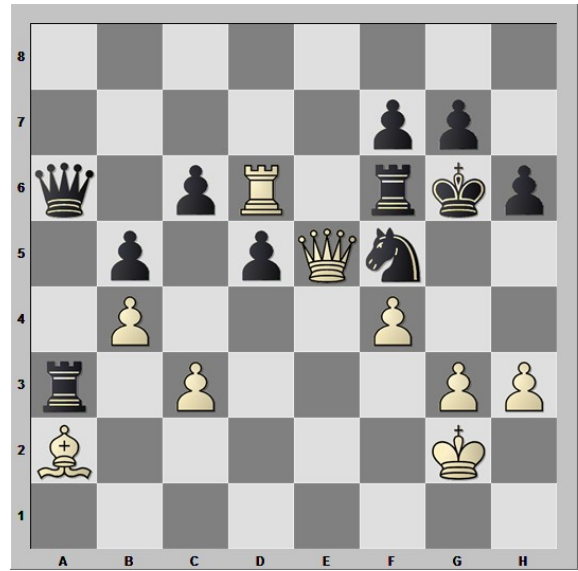
1. Te8+ KxT 2. Tg8#



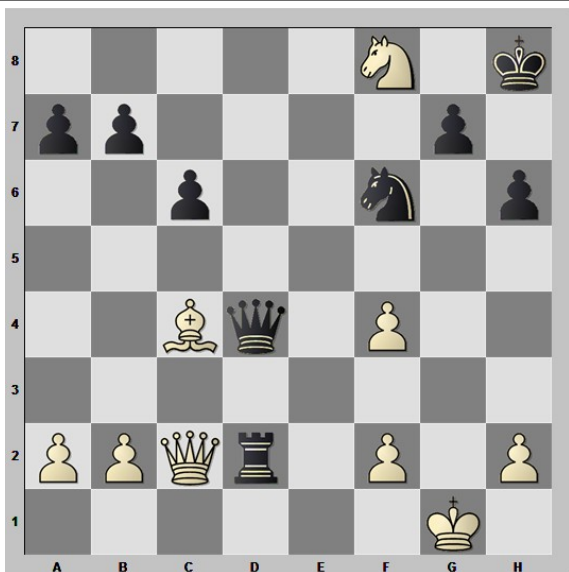
1. Da5+ KxD 2. Tc4#



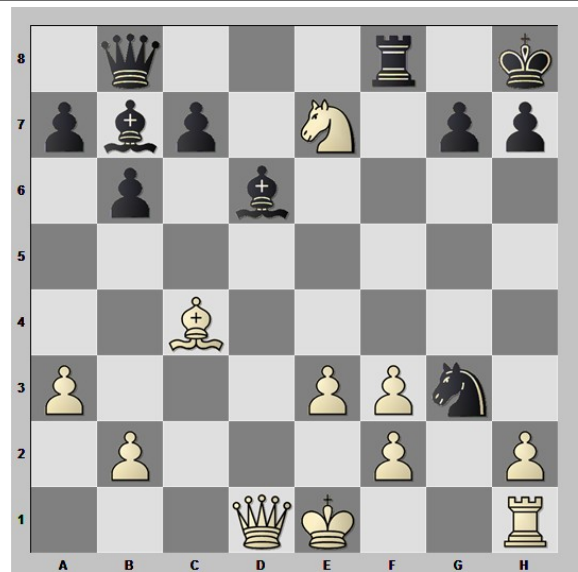
1. Te8 DxT (die Dame ist gefesselt und es drohte DxD#) 2. Dg7#



1. DxS+ (lenkt den König auf f5, der Tf6 ist gefesselt) KxD 2. Lb1#



1. Dh7+ SxD 2. Sg6#



1. Sg6+ hxg6 2. hxg3#